

## ***Directions***

City Mount is located in Causewayend in the Mounthooly area, about 1 km north of the city centre.

To check-in, guests can register at City Mount(if an arrival time is arranged), otherwise at our guest house address, St Elmo (64, Hilton Drive, Aberdeen, AB24 4NP).

By Car - from the South:

Follow the A90 ring-road (to Peterhead), for 3 miles after the Bridge over the River Dee, until you see a sign for University, Old Aberdeen (past fire station). Follow this sign, turning right into Cairncry Road, then turn left at the Rosehill roundabout, with a large granite church on the corner, into Hilton Drive. St Elmo is located 200m up the road on the right hand side.

By Car - from the North or Inverness (A96 or Airport):

Follow the A96 dual carriageway into Aberdeen. Turn right at the Haudigan roundabout into North Anderson Drive, by following the signs South for Perth, Dundee). Then turn second left into Hilton Drive. "St Elmo" is at the far end of this street on the LHS.

## ***Conditions of Rental***

1. Maximum of a family of 4 persons or 3 singles staying (plus baby or toddler).
2. No smoking allowed in apartment or stair wells.
3. Sorry, no pets.
4. No subletting or "hot-bedding".
5. The apartment must be kept and left in a clean & tidy state.
6. No commercial business may be carried out within or from the premises.
7. City Mount is to be used for the purposes of a holiday let to which Section 12 (2) and paragraph 8 of Schedule 4 of the Housing (Scotland) Act 1988 apply.

**Contact:** St Elmo Guest House  
64 Hilton Drive, Aberdeen, AB24 4NP  
Tel: 01224 483065, Mob: 07427676064  
citymount@ensuitedreams.com

# City Mount

## ***Luxury, Self-catering rental apartment***



89f Causewayend, Aberdeen, AB25 3TQ

[www.ensuitedreams.com/citymount/](http://www.ensuitedreams.com/citymount/)  
[citymount@ensuitedreams.com](mailto:citymount@ensuitedreams.com)

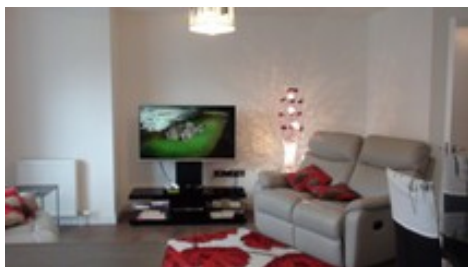
## ***Facilities***

- a lounge with 47", 3D LCD digital Freeview SmartTV, Blu-Ray DVD Player & unlimited wifi internet access. Selection of Books, Games & DVD's.
- a fully fitted kitchen.
- a master en-suite double bedroom with built in wardrobes.
- a twin bedded room with built in wardrobes.
- a family bathroom with bath and shower.
- The apartment is on the 2nd floor and has a video security entry system.
- Bed linen and towels are provided for you and changed weekly if you are staying longer than a week.
- A substantial complimentary welcome food pack is also included.

It is conveniently situated to get onto the A90 bypass to visit the Castle Trail, Malt Whisky Trail, Coastal Trail, Standing Stones & Stone Circle Trail, Royal Deeside and the Scottish Highlands.

Nearby there is Morrison's Supermarket (650m); city centre, railway & coach station & ferry terminal are about 2km. Various bus routes #11, #20, #23, are to be found nearby. Airport 8km on #727 bus route.

His Majesty's Theatre & Aberdeen Music Hall are 1 mile from City Mount. The National Hyperbaric Centre and ARI are 2 miles away. AECC 3 miles & Sports Village 1 mile.



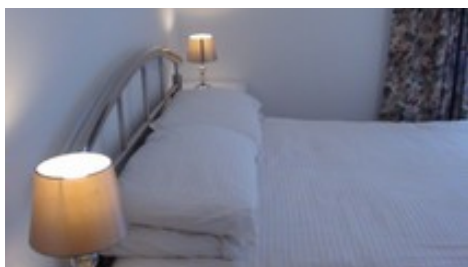
Lounge



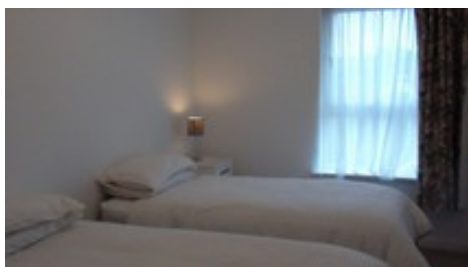
Kitchen



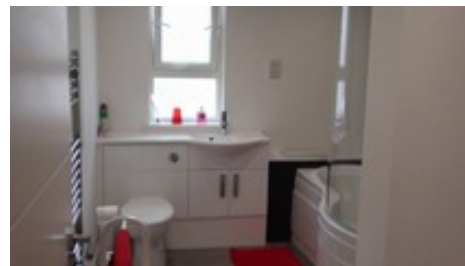
Dining Area



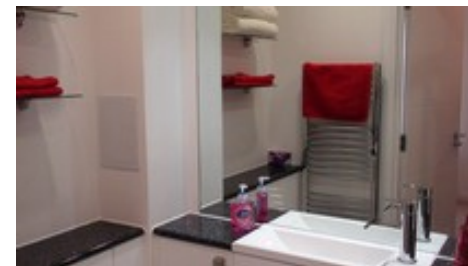
Master Bedroom



Twin Bedroom



Main Bathroom



Ensuite Bathroom

### ***Tariffs***

£550 a week, all year round. (see website for special deals)

A Surety Deposit of £150 is required to book the apartment. This deposit is returned to you after the end of your stay, subject to breakages and adherence to the conditions of rental.

Extra nights are charged @ £110 per night on weekly stays only. Discounts may be available for stays of multiple weeks or working weeks or as a one bedroom flat - please enquire for details.

The rental price includes all heating & lighting, TV & internet access and local taxes and the factors fee to look after the estate, as well as an extensive welcome pack of food.

A return visit discount voucher may be given to guests who take very good care of City Mount.

### ***Payments***

We do not have credit card facilities. All payments are in cash or Sterling cheque made out to "Mr. Kenneth Watt" or we accept electronic bank transfer (at your own expense).

Details of our bank account can be sent to you or you can pay the deposit online through PayPal (see website).

### ***Cancellation policy***

We require 1 month's notice of a cancellation for return of your deposit, and 2 weeks notification of a cancellation otherwise the first week's rent is due.